

**PRODUCT NAME:**  
SAND & GREASE INTERCEPTOR

**DESCRIPTION:**  
WITH TWO COMPARTMENTS  
6250 TO 7000 GALLONS

**DESIGN SPECIFICATIONS**  
DESIGN LOAD: H-20 TRAFFIC RATED

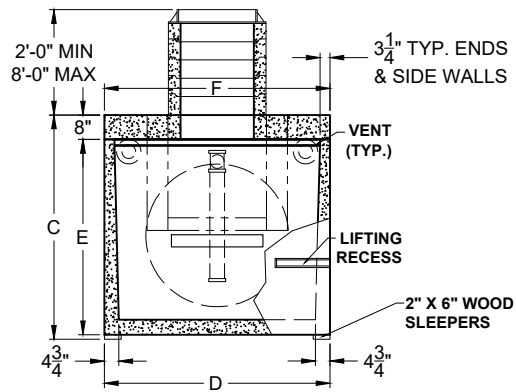
WITH DRY SOIL CONDITIONS (WATER LEVEL BELOW TANK). SUITABLE SUB-BASE BEDDED WITH GRANULAR MATERIAL SHALL BE PREPARED TO HANDLE ANTICIPATED LOADS. FOR COMPLETE DESIGN AND PRODUCT INFORMATION, PLEASE CONTACT PRO-CAST PRODUCTS.

PRO-CAST PRODUCTS RESERVES THE RIGHT TO MAKE CHANGES TO PRODUCT DESIGN AND/OR DIMENSIONS WITHOUT NOTICE. PLEASE CONTACT PRO-CAST PRODUCTS WHENEVER NECESSARY FOR CONFIRMATION OR ADVICE ON PRODUCT DESIGN.

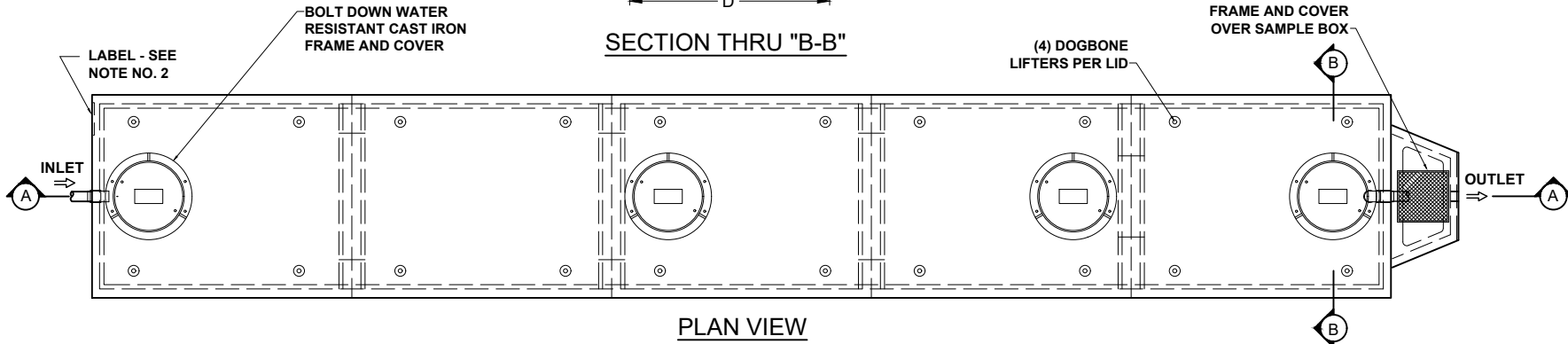
**NOTES:**  
1. NOT USED  
2. REFER TO SPECIFICATION SHEET NOS. S-251 & S-252  
3. REFER TO SPECIFICATION SHEET NO. S-201  
4. REFER TO SPECIFICATION SHEET NO. S-250

**SCALE:** DO NOT SCALE  
**DRAWN BY:** TPC 12.20.2024  
**REVISED BY:**  
**CHECKED BY:**

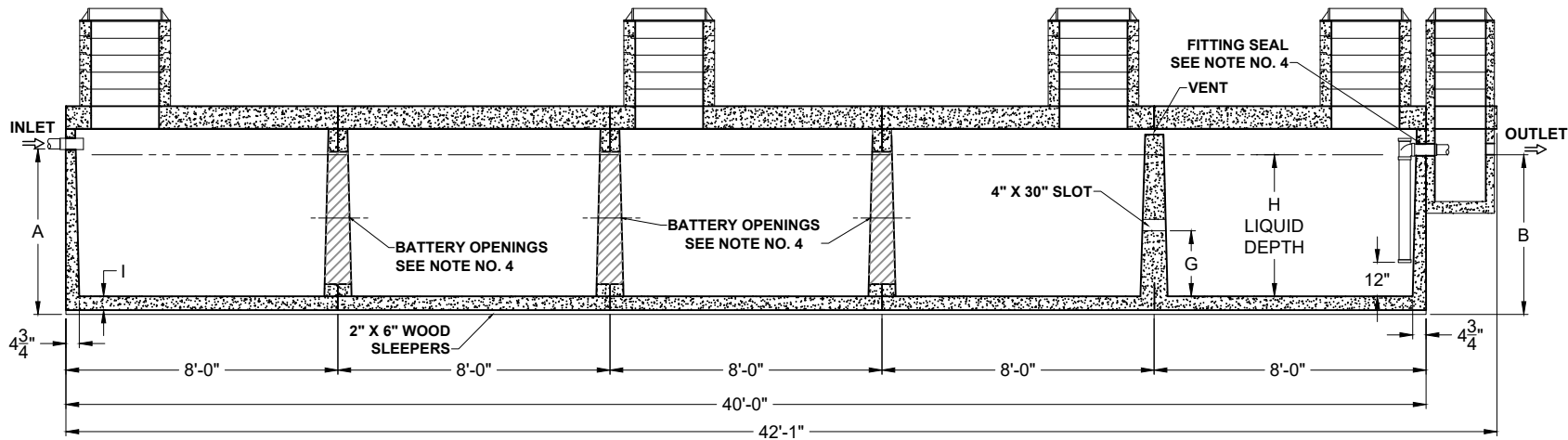
**DRAWING NO.**  
**SG-005**



**SECTION THRU "B-B"**



**PLAN VIEW**



**SECTION THRU "A-A"**

**(2) COMPARTMENTS**

**ALL DIMENSIONS ARE IN INCHES & WEIGHTS IN LBS - (RISER WT. NOT INCLUDED)**

**EXCAVATION SPECIFICATIONS**

MODEL	A	B	C	D	E	F	G	H	I	WEIGHT	LENGTH	WIDTH	BELOW INLET	TANK HEIGHT
PC SG-5-6250-HD	59	57	74	74	64	74	29 1/4	50 1/2	4 1/2	78,625	45'-0"	9'-2"	4'-11"	6'-2"
PC SG-5-7500-HD	62 1/2	60 1/2	77 1/2	85	67 1/2	85	30 3/4	53 1/2	5	91,725	45'-0"	10'-1"	5'-2 1/2"	6'-5 1/2"